



case study house

kemper nomland a. i. a.

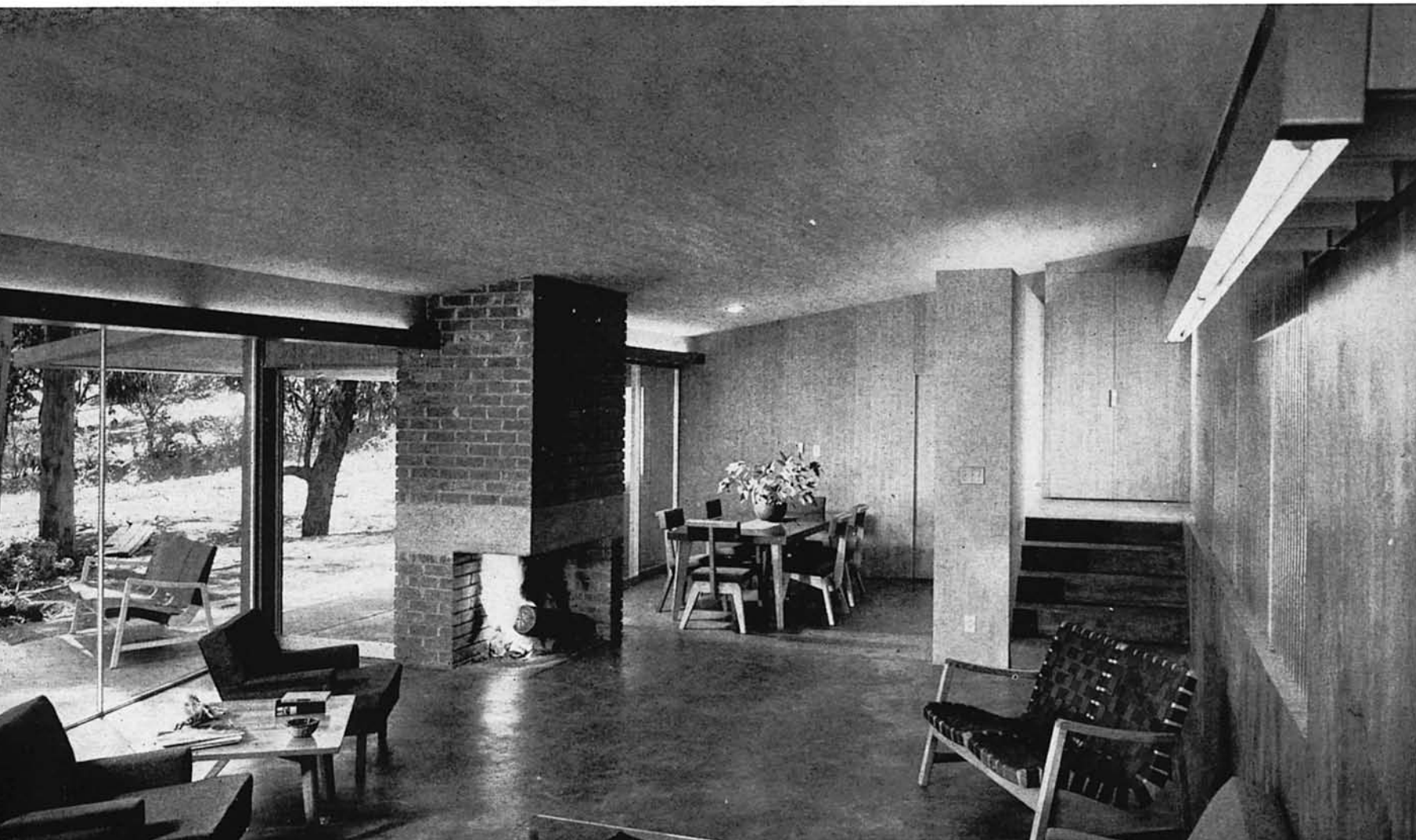
10

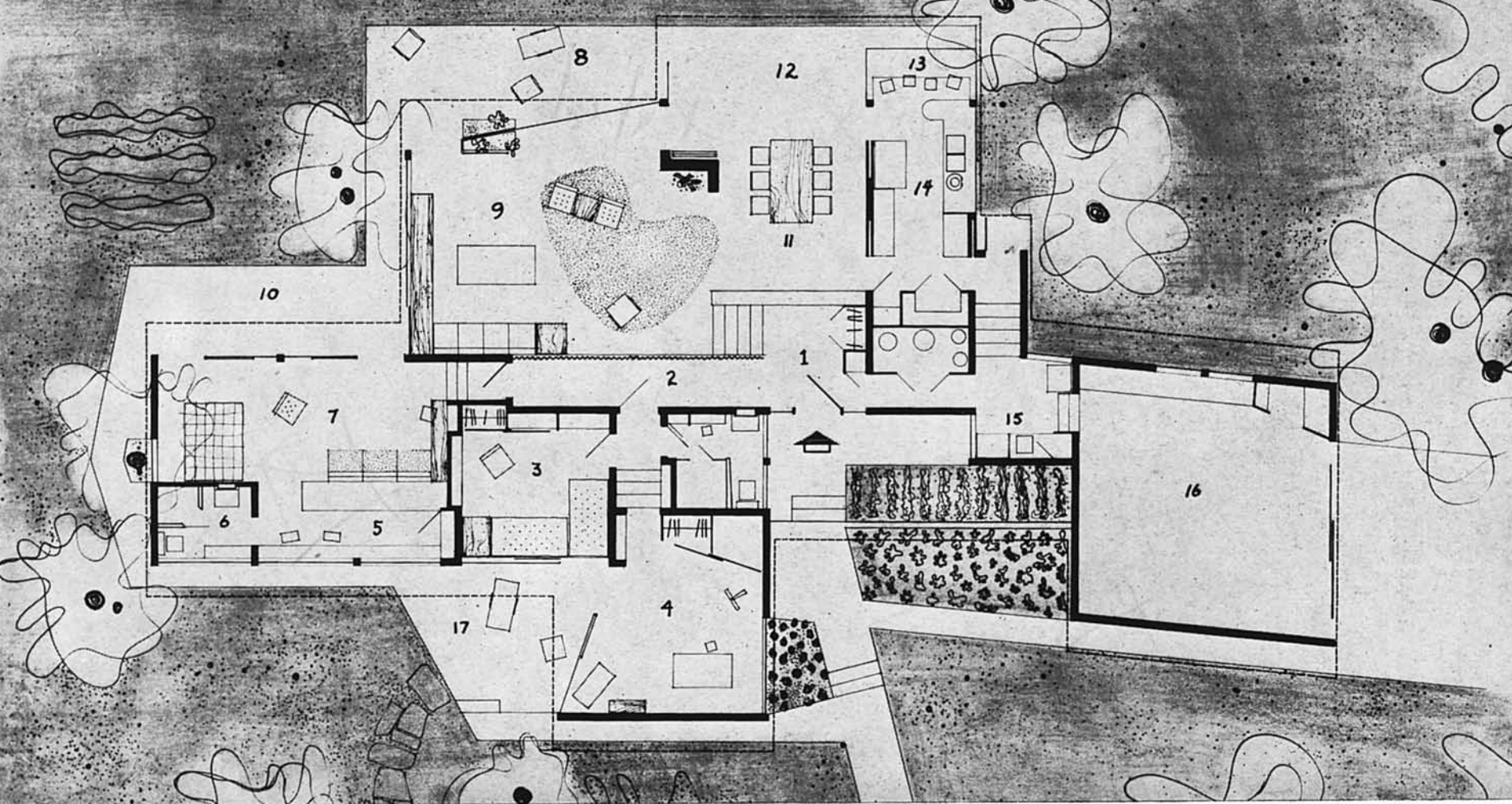


Above — Night view of living room from terrace. A soft over-all glow is reflected from the extended indirect lighting fixture.

Below — The only break between the living and dining area is the fireplace with its open end providing a wide range of vision.

photographs by Julius Shulman





Case Study House No. 10 is built on a sloping corner lot with a drop toward the back and a lesser fall away from the side street. The house is placed parallel to the street frontage, although the side property lines run diagonally from the front and tend to converge toward the rear. All of the many eucalyptus trees were saved, which automatically furnished a major part of the landscaping and set the key for the remainder. The structure is adapted to the contours of the land; a dirt fill next to the living terrace provides a small level lawn area.

Due to the slope of the land the rooms were planned on several levels, enabling the architect to use a simple shed roof over the entire house paralleling the approximate slope of the ground.

The garage is entered from the side street, and a walk from it runs along the front to join the main walk. A narrow entrance porch is recessed between the extended studio room and the back of the garage. A pergola following the roof line covers the lower planting terrace and defines the entrance. The door is a simple slab with well designed, recessed latch hardware. Fixed panels of translucent glass flank each side. The interior entry is near the center of the lengthwise circulation axis. On the right is the narrow passage to the garage and service end of the house. On the left is a gallery leading to the bedroom wing, and directly ahead a guest closet is near the steps which descend to the living area. This all is on an intermediate level and is separated from the living area by a partition of corrugated translucent glass. The guest room and bath are on the same level, and the studio room is several steps higher.



- | | |
|-------------------|--------------------|
| 1 entrance | 9 living area |
| 2 gallery | 10 sitting terrace |
| 3 guest room | 11 dining area |
| 4 studio | 12 dining terrace |
| 5 dressing room | 13 breakfast bar |
| 6 bath | 14 kitchen |
| 7 bed and sitting | 15 laundry |
| 8 living terrace | 16 garage |





Above — The inward deviation of the studio wall gains a protecting corner roof overhang for the guest room sliding window.

Below — A continuous floor slab and the entire glass wall merges the studio room with the terrace and surrounding landscape.



Light flows through the studio room; one side has a large area of pebbled glass panels from floor to ceiling, and the opposite wall is entirely of glass with a sliding door opening onto a partly covered terrace. Here semi-privacy is achieved by the acute angle of the facing wall, the fortunate location of a clump of trees and the decided drop in the ground level.

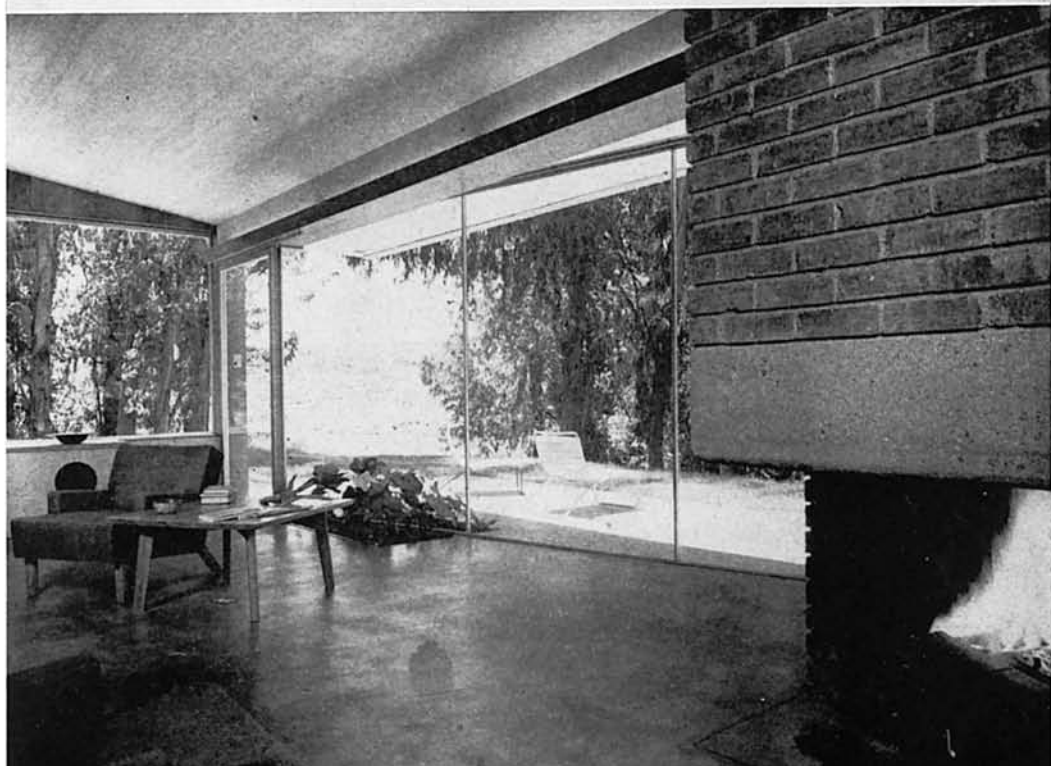
The outside wall of the guest room is in pebbled glass panels, one sliding and one fixed. Since the floor is below that of the studio, the opened wall is actually window height, and two couch beds fit beneath it. The other walls are lined with built-in bookcases, wardrobes and general storage. An indirect slimline light swings out into the center of the room.

The master bed and sitting room is at the end of the gallery, with bath and dressing room both on the street side. A long wardrobe separates the dressing room from the rest of the bedroom, light being received from the high windows above the built-in dressing table. The bed faces the sitting terrace which may be seen from the living room when the sliding translucent windows in that room are open. A desk has been designed to fit the inside wall of the bedroom under a recessed row of book shelves, and a part of it becomes the end table for the built-in settee.

Every effort has been made to incorporate the surrounding landscape with the living and dining area. The brick fireplace, open on one side, is the only interruption to the complete openness of this face of the house.

The floor slab is continuous from the inside to the terrace. A small indoor-outdoor planting area accents the corner of the fixed-glass, angled wall of the living room. One door to the terrace is in the corner adjacent to the planting and the other swings free of the fireplace corner. The roof overhang extends many feet above the dining terrace, and glass walls slide into a recess in back of the fireplace. This arrangement gives a flexibility in dining. The table may be pulled partially or completely onto the sheltered terrace; accessibility to the kitchen is planned for equal convenience.

The partition between the entry and dining area is a storage wall which continues into the kitchen to serve as broom closet and baking cupboard and has been well worked out to hold all the kitchen apparatus. The kitchen is galley type with the stove and refrigerator on the inside wall under high storage cabinets. The sink counter, equipped with electric dishwasher, is beneath the large window facing the side street. The work surface is increased by turning the counter at right angle a few feet free from the wall. This provides a divisional serving buffet for the breakfast bar. On three sides, large windows are flush with the counterheight table surface, furnishing a pleasant, convenient place for meal planning, phoning or snacks.





The back door leads up to a small laundry room which opens into the main traffic passage. Near this point is the large heater room.

The garage on the same level has deep and shallow storage and workspace under the windows.

The entire house rests on a double concrete slab with mopped-down membranes between Wrought iron radiant heating pipes are embedded in the upper 3½ inches of this slab as well as a grid of temperature steel on top of the pipes. The house is frame construction with Weldtex plywood on the outside and much of the inside. The balance of the inside paneling is birch and mahogany plywood, some of which is used for the built-in case work. The ceiling throughout is Douglas Fir 1 x 4 flooring, finished with a white pine coat allowing the grain of the wood to show. Plate glass, held in place by aluminum sash or tubular aluminum sections for the sliding glass doors, is used in all opening except a few which have translucent glass. Indirect slimline lights supplemented by a few direct spots, are used in all the rooms.

This house is planned for a family of adults, making the protracted arrangement of rooms both plausible and desirable, and the small kitchen and utility space adequate. The generous use of translucent glass answers the demand for a feeling of openness and light without sacrificing any privacy.

